


DRIVING VIDEO RECORDER DR 820 Quick Guide

Scan this QR code
More information on HELLA Driving Video Recorders



A Prestige Brand Established Since 1899 GERMANY

PRODUCT OVERVIEW



- Main Camera Lens
- Security LED
- Main Bracket / Both side Tape
- Bracket angle adjustment screw
- GPS LED
- REC LED
- WiFi registration button
- Power Button
- Power connection slot
- Rear Camera connection port
- GPS connection slot
- WiFi USB
- SD memory card slot

- Rear Camera Lens
- LED
- Rear Camera Bracket
- Front cable connection port

SD Memory Capacity and Recording Time

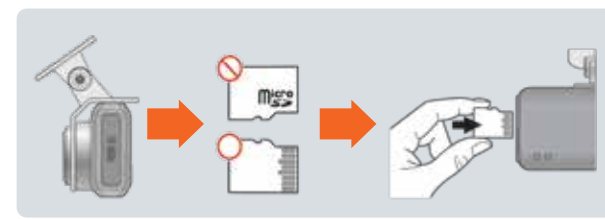
SD Card Capacity	1080P Video Recording Time
4GB	30 min
8GB	1 hrs
16GB	2 hrs
32GB	4 hrs
64GB	8 hrs
128GB	16 hrs
256GB	32 hrs

- Class 10 SD card recommended.
- It is recommended to change your SD card every 6 months.

INSTALLATION

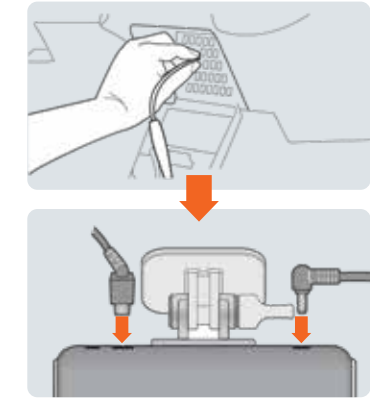
Memory Card Insert

Please be fully aware before using Micro SD Memory.

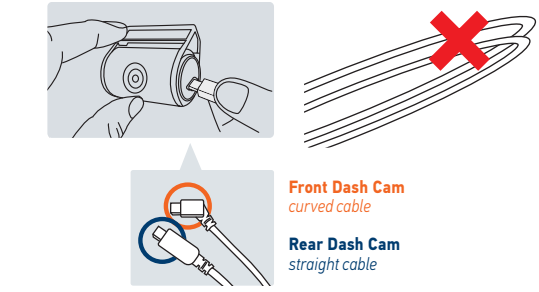


DR 820

- Connect direct power cable to fuse box in the vehicle.
- Connect direct power cable to power connection slot on the front dash cam



- Detach the adhesive tape on the rear dash cam and place it on the rear window suitable position.



DR 820

PACKAGE COMPONENTS

Basic Components



Optional Accessories:



DR 820

SPECIFICATION

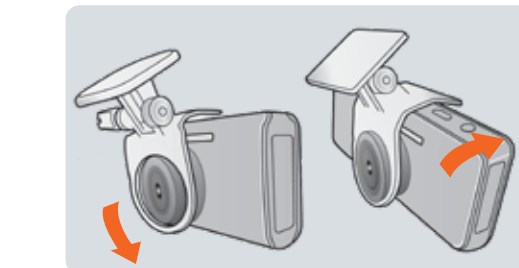
Image Sensor	Full HD CMOS Sensor
Audio Input	Built-in Microphone
Video / Audio Compression	H264 / ADPCM
Resolution	Front / Rear Full HD 1080P (1920x1080)
FPS	Max. 30fps
WiFi enabled	Standby mode for mobile registration.
ADAS	LDWS, FCWS, FVDW
G-Sensor	Starts recording when it senses external impact
Voice Guide (Speaker)	Operation Status alarm / Voice guidance
External GPS Sensor	Synched with Google map, Keep track of location and speed of the vehicle
Lens	140°
Viewer	Windows XP/7/8/10, Support 32Bit / 64Bit, Supported over OSK 10.7 64Bit, Synchronizing Google map with PC viewer is supported over Windows7 and explorer 10 as per Google's policy.
Power	DC 12V - 24V
Allowable current of providing fuse	3A
Operating Temperature	-20°C ~ 70°C
Humidity	10 ~ 95%

• Improvement on Specifications and Components may be changed without further notice.

DR 820

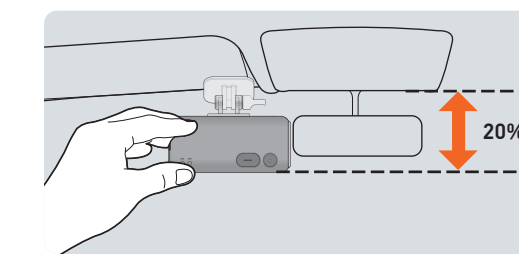
PRODUCT INSTALLATION

- Secure the bracket to the front dash cam until a click sound is heard.



- Insert the memory card into memory card slot.

- Install front dash cam to front windshield, then adjust the position.

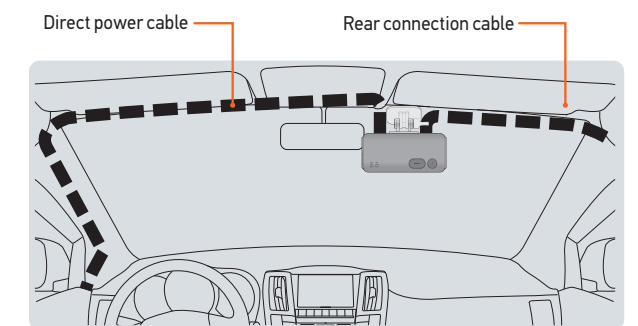


Note: Dash cam orientation varies depending on vehicle brand & model.

DR 820

- Tuck power cable and rear dash cam connection cable to roofline and pillar.

CAUTION: Few car navigations may face GPS reception of interruption. When installing Power cable and Rear cam connection cable, Recommend installing each cable in the opposite direction. For instance, Power cable is toward driver seat and rear cam connection cable is toward passenger seat.



DR 820

ADAS SETTING

ADAS is only possible when using an external GPS connection (sold separately)

ADAS Setting - Android Smartphone

By activating the application, you can set-up ADAS setup menu.



- ADAS use: By pressing button, you can select features. This activates when over speed limit of setting speed.
- LDWS: Triggers the alarm when the vehicle is out of lane. This activates when over speed limit of setting speed.
- FVSA: When the front vehicle departs away over 2M distance, the alarm will trigger.
- FCWS: When the front vehicle distance is sharply decrease, the alarm will trigger.
- LDWS speed: Setting the minimum speed detection (50km/h, 60km/h, 70km/h)
- LDWS sensitivity: Setting the sensitivity (Lower, Medium, Higher)
- FCWS sensitivity: Setting the FCWS (Lower, Medium, Higher)

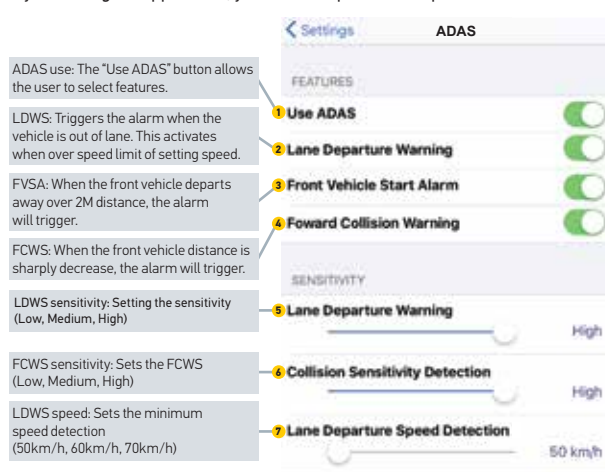
Android Smartphone ADAS Lane Compensation



DR 820

ADAS Setting - Apple iOS

By activating the application, you can set-up ADAS setup menu.



iOS Smartphone ADAS Lane Compensation



DR 820

TAMPER CHECK / PARKING MONITORING MODE

Tamper Check

- By pressing user registration button for 5 seconds or more, the Tamper Check Feature will be activated with voice guidance.
- All recording files in SD card will be verified through inspection, there will be buzzer sound every time each file is completed.
- When it detects tampered recording file, the record will be saved as designated directory (sdroot/config/tamper.txt)
- The result of tamper check will be notified to user with Voice guidance. No tamper detection: "Data verification passed." Tamper detection: "Data verification failed."
- If user pressed the button again, the dash cam will restart to activate normal recording.

Park Monitoring Mode (Smart Motion Detection)

- When parking mode is ON and motion detection is OFF, the dashcam continuous records with low image resolution (10 fps)
- When parking mode is OFF, the dashcam continuous records with high image resolution (30 fps)
- When parking mode is ON and motion detection is ON, recording starts when there is movement detected (10 fps)

DR 820

SMARTPHONE CONNECTION

How to connect - Android

- Run HELLA app icon after installation to smart device.
- The screen of HELLA app is shown horizontally. For initial set-up, the message to guide you to register dash cam will show up. Select "No" to terminate the application or select "Yes" to go to the product registration page.
- It will search and display registered dash cams, SSID and model name.
- Press the WiFi registration button of product, there will be voice guidance "Stand-by mode for the registration" and select the product on the list that you want to register by tapping the "Search" button. Press the "Search" button if you want to search the device again. The registration has to be done within 2 minutes.
- In the case where registration is not active or connection is failed in standby mode, voice guidance will appear and you will have to press the WiFi button to activate the registration mode again. (If re-registering, it automatically registers last installed smartphone)
- Registration process is completed as right picture shown. User can modify dash cam name as desired and this can be useful when the user needs several product connections.

DR 820

- Press the WiFi registration button on the device to activate register standby mode. (Voice guidance: "Stand-by mode for the registration")
- The registration has to be done within 2 minutes. In the case where registration is not active or connection is failed in standby mode, voice guidance will appear and you will have to press the WiFi button to activate the registration mode again. (If re-registering, it automatically registers last installed smartphone)


Front/Rear Real-Time Image

- Check real time recording.
- Play recorded video files in list which are organized on the timeline.
- Setup the product via smart phone easily if touch the "Settings" icon. It will be rebooted once when press save button after finishing setup.
- If you touch the "help" button, you can check the WiFi setting help page.

When it is playing video, Dash Cam will not be recorded for stabilization. After it is changed to "live mode", the recording will be started automatically.

DR 820

PC VIEWER



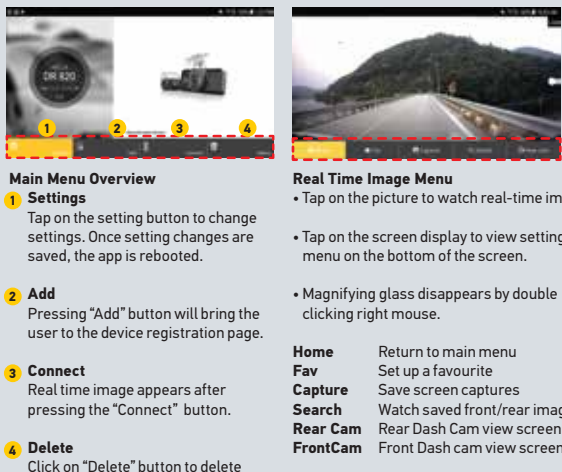
- Recording File list
- GPS reception Available only when installed GPS.
- Google MAP Only available when there is GPS connection.
- Screen Switch Color / Black and White Mode
- G-Sensor (Acceleration) Graph
- Playback speed
- Volume
- Playback Recording
- Reverse Play, Normal Play
- Pause
- Repeat event
- Step Reverse, Step
- 1 Frame Play
- Speed meter Available only when installed GPS.
- Video Control
- Thumbnail
- Drawing a lane
- Print
- Backup
- Setup
- Open file

How to check the G-sensor data

- Locating where recording is playing
 - Data and graph (G-sensor data)
- When play the video, you can check the G-sensor data of X-axis (direction), Y-axis (left and right), Z-axis (height).

DR 820

Main Menu/ Real-Time Image



- Settings Tap on the setting button to change settings. Once setting changes are saved, the app is rebooted.
- Add Pressing "Add" button will bring the user to the device registration page.
- Connect Real time image appears after pressing the "Connect" button.
- Delete Click on "Delete" button to delete existing camera info.

Real Time Image Menu

- Tap on the picture to watch real-time image.
- Tap on the screen display to view settings menu on the bottom of the screen.
- Magnifying glass disappears by double clicking right mouse.

Home Fav Capture Return to main menu

Search Set up a favourite

Rear Cam Save screen captures

FrontCam Watch saved front/rear images

Rear Dash Cam view screen

Front Dash Cam view screen

How to connect - Apple iOS

- Run HELLA app icon after installation to smart device.
- Turn on Wi-Fi function of smart device.
- Select "HELLA_DR 820_XXXXX" in the WiFi list.
- Put [qwertyuiop] in the password window and touch the "Join" button.

DR 820

PRECAUTION

- Voltage Issues**
- Please use recommended/stable voltage only. Otherwise, improper use may cause product failure and fire accidents, explosion or damage to the vehicle.
- Installation**
- Do not mount dash cam on area where it obstructs the driver's view or the operation of the vehicle itself.
 - Do not install the device on colored or heavily tinted windshield as it may affect video quality.
- Usage and General Management**
- Image quality could deteriorate when the temperature of the device exceeds the optimal operating temperature.
 - Please check whether the device is functioning before driving a car.
 - Do not remove SD card or turn off the power cable during firmware update, it may cause malfunction or loss of data.
 - For safety, do not operate dash cam while driving.
- Memory Card and Precaution**
- There is the lifetime of memory card for rewriting which is expendable product. Periodic care is required.
 - The device must be turned off when ejecting the memory card. It may cause loss of data or malfunction of the memory card when user forces switch-off while it is running.
 - Video data may be damaged due to a defective memory card or short lifetime of memory card.
 - Genuine memory card is recommended to avoid error, incompatibility or malfunction of the product.
 - Please check your memory card once every month for maintenance and stability. It is recommended that you check memory card through SD master program (www.sdcard.org).
 - Time required may vary depending on the memory capacity to use SD card if it is the first time of using it.
 - Please do not remove the SD card while the device is running or when it is being turned off.

DISCLAIMER

The device is not intended to be used for illegal purposes and/or surveillance. It shall not be used in any form as evidence for claim purposes.

Some countries prohibit drivers from mounting anything on the windshield, or restrict mounting to specific areas of the windshield. It is the owner's responsibility to mount the device in compliance with local laws.

Errors may occur depending on the surrounding environment and the voltage of the car.

Please check date/time if the device is not used for a long period of time. If user doesn't use dash cam for a long time, dash cam would be initialized except for connecting with External GPS.

Though this product records and saves footages in the event of accident, it does not guarantee every single accident scenes are fully recorded.

Accident scenes may not be recorded if there is minor impact on the vehicle as the impact sensor may not be able to detect.

HELLA is not liable/responsible for non-recorded event, missing files, etc.

In the event that the product is used as proof of accident, HELLA will not be responsible for any gain or loss caused by the accident.

DR 820